

LC-101 Tank Level Meter / Display with Modbus

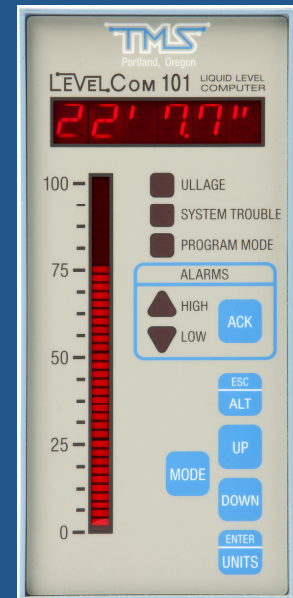
Provides real time information on levels and system status

Use with any external or submersible sensor with 4 to 20mA output (pressure transducers, floats, ultrasonics, etc.)

Monitors and displays level and tank information

Engineered specifically for tank use

Local Display with Modbus Communication Output



Readings are displayed on the bar graph as percentage of tank capacity, numerically as engineering units (English/Metric) on the digital display.

- Easy Installation and Setup
- 10 point tank configuration table for accurate volume & weight with irregular tanks
- Programmable specific gravity input, works for all liquids
- Self Diagnostics
- Alarms – high-high to low-low
- Control Relays

- Marine**
- Wastewater**
- Industrial**
- Environmental**
- Fuel**
- Process Liquids**
- Service Tanks**

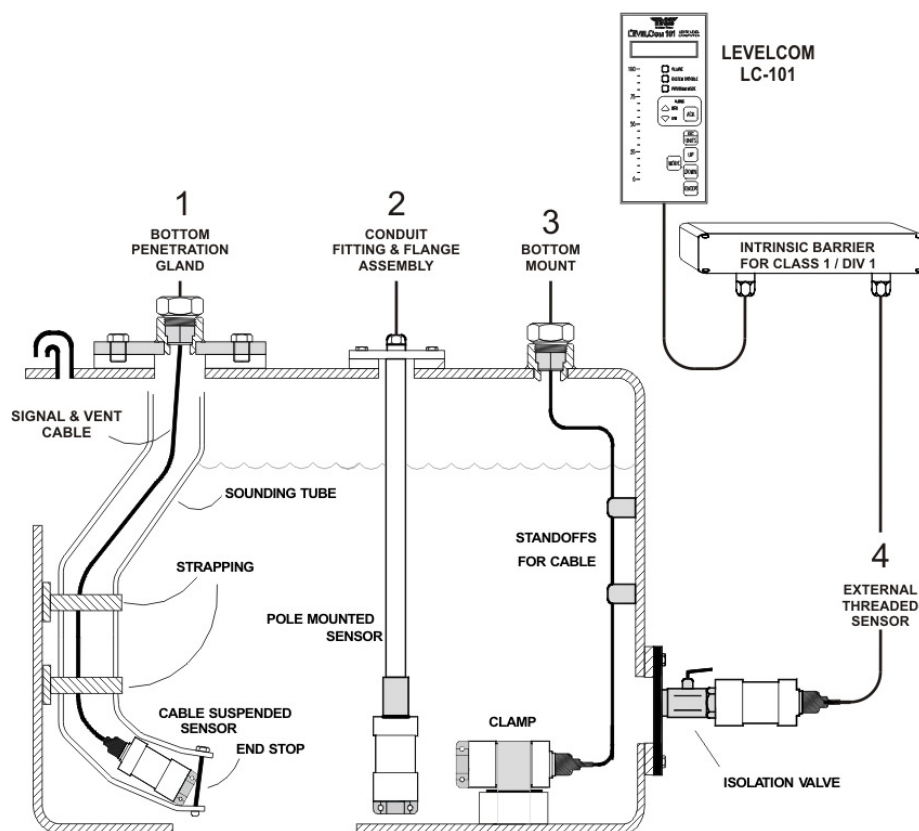
LC-101 FEATURES

Alarms & Controls

The LC-101 has three relays. Two relays have form C contacts and can be configured for either alarm or control functions. The third relay has a single form A contact and is intended to drive a warning horn for local alarm indication.

The LC-101 is self-diagnostic and can detect hardware errors, including a failure of the sensor signal or loss of the digital communication signal. When an abnormal condition is detected, the LC 101 displays the appropriate error message on the display and activates an alarm.

Can be configured for ULLAGE the display indicates how much of the tank remains to be filled. Typically ullage readings indicate 0 for full tank, and the maximum value for empty tank.



Sensor Installations Not Requiring Tank Entry

In tank submersible installations require the tank be emptied, cleaned, vented and certified by a chemist so the tank is safe for entry and hot work. This is always expensive and can be avoided in some instances.

Two examples of sensor installations that do not require tank entry are shown in the illustration above:

1. Shallow tanks (less than 8 feet) often can be outfitted from the top of the tank using a pole mounted submersible transducer installed from the tank top flange.
2. If a ball valve exists near the tank bottom, an external pressure transducer can be mounted in a pipe fitting on the outside of the valve. In the event of sensor failure, the valve can be closed and a new transducer easily installed.

SPECIFICATIONS

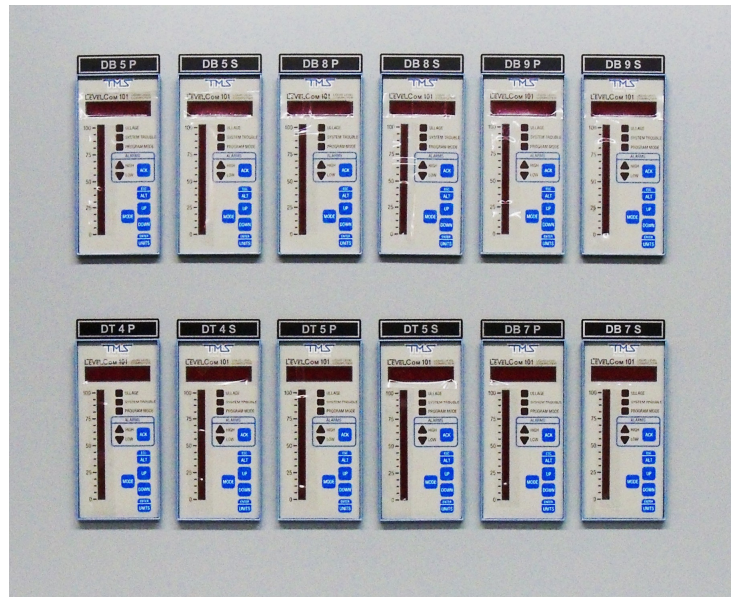
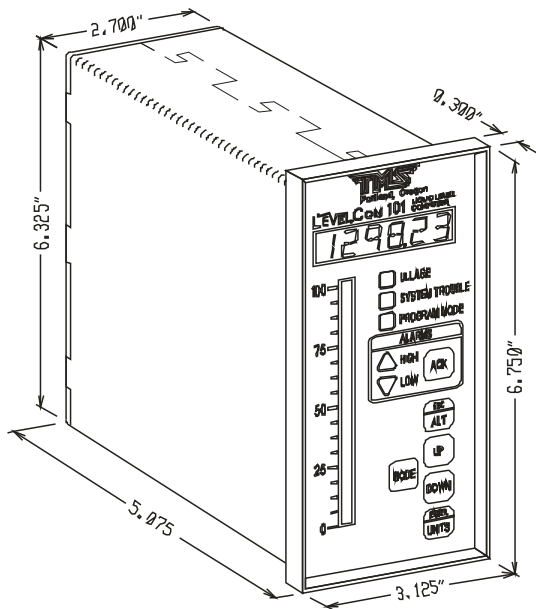
Display	6 Character digital display, 40 segment bar graph
Communication Protocol	RS 422/485 Modbus
Digital Communication	Configurable for use with LevelCom LC100 as repeating station or Secondary Remote Readout
Panel / Cabinet Fabrication	Made to customer requirements
Approvals	ABS Type Approval , UL Listed, ISO 9001 Certified Manufacturer
Power	120VAC / 0.1A / 50/60 Hz Standard; Fuse 0.25A
Temperature	Operating range: -10° F to +140° F (-23.3° C to +60° C)
Humidity	5–95% RH non condensing
Enclosure	NEMA 4 Front - with gasket, Membrane face and keypad brushed aluminum case with powder coated aluminum alloy bezel with 304 stainless steel fasteners
Inputs	3–Analog 4-20mA ADC current inputs, Source 24VDC sink 12 to 24VDC, Impedance 200 Ohms
Output	2–SPDT 5A Relays: 1 SPST 5A Relay
Dimensions	6.325" (16.0655cm) H x 2.7" (6.858cm) W x 5.075" (12.89cm) D
Alarm Set Points	Four (4) programmable internal set points
Control Set Points	Four (4) programmable set points (Control 1 & 2 On/Off)
Security	User defined 1 - 6 digit password protection

LevelCom Services

- System Design
- Transducers
- Panel/Enclosure – Design & Fabrication
- Installation
- Commissioning
- Field Service

THE LEVELCOM ADVANTAGE

The LC-101 Tank Level Meter and Display is a small foot print single tank monitoring system in an easy to install package. The LC-101 Provides real time level information and system status as well as high and low level alarm functions. Modbus communication is standard.



TMS is the leader in developing and refining pulsed bubbler and tank monitoring technology over the past 18 years. LevelCom products have earned a reputation for being very accurate, dependable monitoring systems with a long trouble free service life.

Represented by:

6040 N. Cutter Circle
Suite # 302
Portland, OR 97217



Phone: 503-285-8947
Fax: 503-285-1379
Email: info@levelcom.net